

Early Bird Satellite Session

TIME-LAPSE

LIVING WITH THE IMPACT OF GENERALISED MYASTHENIA GRAVIS

Monday, 21 June 2021 | 07:15–07:45 CEST, Room Seville

Join our esteemed faculty member, **Maria Isabel Leite, MD, DPhil, FRCP**, as we look through the patient lens to explore the impact of time lost to uncontrolled generalised myasthenia gravis (gMG) symptoms on patients' lives.



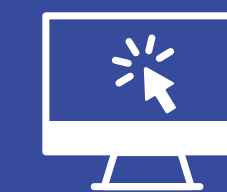
Maria Isabel Leite, MD, DPhil, FRCP
Associate Professor and Consultant Neurologist,
Nuffield Department of Clinical Neurosciences
University of Oxford, UK

Agenda

Exploring the impact of generalised myasthenia gravis

A holistic view of disease burden

Future perspectives



Visit UCB in the Industry
Network Area and discover
why gMG never rests



Inspired by **patients**.
Driven by **science**.

This non-promotional educational meeting has been organised and funded by UCB.

© 2021 UCB Group of Companies. All rights reserved. GL-N-DA--2100038. Date of preparation: April 2021